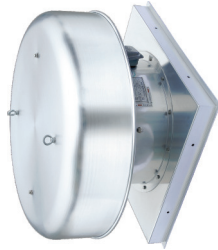


Roof Ventilator 屋顶风机



The impeller of the axial roof ventilator is aluminum alloy die casting. It is with aerofoil blade, which is rigid, light and adjustable within 25° to 50° of angles. There are a variety options available.

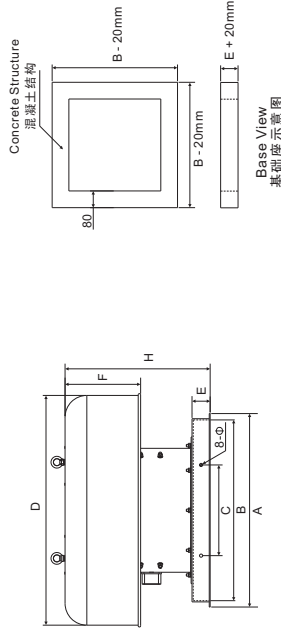
- There are 2 options available in terms of material (enclosure) of the ventilator:
1. For model made of aluminum, it is generally intended for buildings that can not support heavy objects. (Optional models begin from GXF2.8 up to GXF7.1)
 2. For models made of steel, it is generally intended for buildings that can support heavy objects. (Optional models begin from GXF2.8 up to GXF12.5)

该产品的轴流式屋顶风机，风叶部份为铝合金压铸成形，其叶片为机翼型产品，具有强度高、叶片重量轻、叶片角度可调，调节角度为25°至50°的组合式风叶，性能范围广，可选择性优越。

此产品共分两种材料制成：

1. 满足钢结构建筑屋顶受力的产品，型号范围：GXF2.8-GXF7.1之间
2. 负重较大的建筑，可采用全钢制产品，型号范围：GXF2.8-GXF12.5之间

External Dimensions (Aluminum & Steel Casing) 外形尺寸(钢制和铝制)



Dimension Table 尺寸表

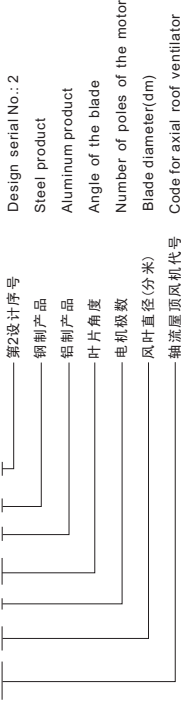
型号 Model No.	A	B	C	D	E	F	H	8-φ
2.8	520	480	240	580	60	220	435	10.5
3.15	560	520	260	580	60	220	435	10.5
3.55	590	550	275	580	60	220	465	10.5
4.0	640	600	300	760	60	250	485	10.5
4.5	690	650	325	760	60	250	535	10.5
5.0	740	700	350	900	60	250	535	10.5
5.6	800	760	380	900	60	250	535	12.5
6.3	870	830	415	1110	60	250	585	14.5
7.1	950	910	455	1110	60	250	585	14.5
8.0	1050	1000	500	1250	60	250	685	14.5
9.0	1150	1100	550	1550	60	250	790	16.5
10.0	1250	1200	600	1750	60	350	980	16.5
11.2	1400	1350	680	1980	60	350	930	16.5
12.5	1550	1500	800	2150	60	350	1000	16.5

Remarks: Models with steel casing: GXF2.8 to GXF12.5, which totals 14 specifications. 说明：钢制产品型号：GXF2.8-12.5共14种规格。
Models with aluminum housing: GXF2.8 to GXF7.1, which totals 9 specifications. 全铝制产品型号：GXF2.8-7.1共9种规格。

Roof Ventilator 屋顶风机

Model Explanation 型号说明

GXF 5.6-4-35° (L.G.)-2



Electrical Ratings 技术参数

型号 Model No.	转速 Rotating Speed (R.P.M.)	设计序号 Design Serial No.	风量 Total Air Flow (m³/h)	全压 Total Air Pressure (Pa)	噪音 Noise (dB)	功率 Power (kw)	净重 Net Weight (kg)
2.8-4B	1450	1	767	65	54	0.06	44
		2	1100	52.9	52	0.06	44
		3	1370	37	51		110
2.8-4A	1450	1	1060	76.3	58	0.06	46
		2	1380	61	55		114
		3	1550	46.6	53		
3.15-4B	1450	1	1040	70.1	56	0.06	46
		2	1500	57.5	55	0.06	46
		3	1960	40.1	55		114
3.15-4A	1450	1	1500	86.2	59	0.06	46
		2	1930	71.7	57	0.06	46
		3	2220	50.1	56		114
3.55-4B	1450	1	1310	78.5	59	0.06	47
		2	2120	62.7	57	0.06	47
		3	2570	47.2	57		118
3.55-4A	1450	1	1800	103	62	0.12	44
		2	2510	84.8	60	0.12	44
		3	3030	54.1	58		110
4.0-4B	1450	1	1960	73.9	59	0.12	44
		2	2820	63.5	58	0.12	44
		3	3330	47.4	58		110
4.0-4A	1450	1	2340	101	63	0.18	44
		2	3400	127	65		110
		3	4000	72.9	61		110
4.5-4-25	1450	1	2790	128	65	0.25	44
		2	3730	101	63	0.25	44
		3	4100	81.4	62		110
4.5-4-30	1450	1	3200	145	67	0.37	63
		2	4630	115	66	0.37	63
		3	4990	96.9	65		157
4.5-4-35	1450	1	3790	156	68	0.37	63
		2	4750	146	68	0.37	63
		3	5680	111	68		157
4.5-4-40	1450	1	4350	170	69	0.55	66
		2	5970	150	69	0.55	66
		3	6580	118	68		164

Remark: 1. The technical data is tested at 380V~ / 50Hz / 3Ph. 备注：1、以上所有参数均由380V~ / 50Hz / 3Ph进行测试。
2. Customized rated voltage and frequency are available. 2、可根据客户的额定电压和频率来订做合适的产品。

型号 Model No.	转速 Rotating Speed (R.P.M.)	设计序号 Design Serial No.	风量 Total Air Flow (m³/h)	全压 Total Air Pressure (Pa)	噪音 Noise (dB)	功率 Power (kw)	净重 Net Weight (kg)
4.5-4-45	1450	1	5390	174	70	0.55	66
		2	8120	160	69	0.55	66
		3	8920	136	69		110
5.0-4-25	1450	1	3320	154	68	0.37	44
		2	5050	122	66	0.37	44
		3	5780	90.2	65		110
5.0-4-30	1450	1	4350	170	70	0.55	46
		2	5710	156	70	0.55	46
		3	6940	107	69		114
5.0-4-35	1450	1	5120	186	71	0.55	46
		2	6850	165	70	0.55	46
		3	7950	128	69		114
5.0-4-40	1450	1	5930	198	72	0.75	46
		2	7610	182	71	0.75	46
		3	9110	141	70		114
5.0-4-45	1450	1	6810	210	72	1.1	47
		2	8770	194	72	1.1	47
		3	9210	170	72		118
5.0-6-30	960	1	2820	72.9	60	0.18	44
		2	3700	64.7	60	0.18	44
		3	4440	49.1	59		110
5.0-6-35	960	1	3500	80.2	62	0.18	44
		2	4230	74.8	61	0.18	44
		3	5020	59.2	60		110
5.0-6-40	960	1	3860	86	63	0.25	44
		2	4840	80	62	0.25	44
		3	5910	63	62		110
5.0-6-45	960	1	4500	90	64	0.25	44
		2	5530	81	63	0.25	44
		3	5970	74	63		110
5.6-4-25	1450	1	4620	195	71	0.55	63
		2	6100	167	70	0.55	63
		3	7770	106	68		157
5.6-4-30	1450	1	5230	218	73	0.75	63
		2	7370	188	72	0.75	63
		3	8770	146	71		157

Roof Ventilator 屋顶风机

Electrical Ratings 技术参数

型号 Model No.	转速 Design Speed (R.P.M.)	风量 Volume (m ³ /h)	总压 Pressure (Pa)	噪音 Noise (dB)	功率 Power (W)	净重 Net Weight (kg)
5.6-4-35	1450	17350	231	74	1.1	66
5.6-4-35	1450	17350	201	73	1.1	66
5.6-4-35	1450	10700	166	73	1.1	66
5.6-4-40	1450	8270	248	75	1.1	66
5.6-4-40	1450	10600	219	75	1.1	66
5.6-4-40	1450	12000	183	74	1.1	66
5.6-4-45	1450	9430	254	76	1.5	68
5.6-4-45	1450	12000	226	75	1.5	68
5.6-4-45	1450	13100	200	75	1.5	68
5.6-6-25	960	3200	85	62	0.18	63
5.6-6-25	960	4420	66	60	0.18	63
5.6-6-25	960	5030	50	59	0.18	63
5.6-6-30	960	3710	84	64	0.18	63
5.6-6-30	960	5600	69	62	0.18	63
5.6-6-30	960	6700	59	62	0.18	63
5.6-6-35	960	4400	102	65	0.25	63
5.6-6-35	960	6310	86	64	0.25	63
5.6-6-35	960	7250	68	64	0.25	63
5.6-6-40	960	5570	108	67	0.37	66
5.6-6-40	960	7050	95	66	0.37	66
5.6-6-40	960	8020	79	65	0.37	66
5.6-6-45	960	6240	111	67	0.37	66
5.6-6-45	960	8000	98	66	0.37	66
5.6-6-45	960	8840	85	66	0.37	66
6.3-4-25	1450	14900	234	75	1.5	73
6.3-4-25	1450	16700	169	71	1.5	73
6.3-4-25	1450	18300	127	71	1.5	73
6.3-4-30	1450	13300	242	75	1.5	74
6.3-4-30	1450	15000	204	74	1.1	74
6.3-4-30	1450	16600	174	73	1.1	74
6.3-4-35	1450	9500	264	77	1.5	74
6.3-4-35	1450	13200	231	76	1.5	74
6.3-4-35	1450	15600	179	76	1.5	74
6.3-4-40	1450	11800	285	78	1.5	77
6.3-4-40	1450	14500	258	77	1.5	77
6.3-4-40	1450	17700	203	77	1.5	77
6.3-4-45	1450	13400	288	79	2.2	80
6.3-4-45	1450	16200	270	78	2.2	80
6.3-4-45	1450	19200	221	78	2.2	80
6.3-6-25	960	3170	101	66	0.18	70
6.3-6-25	960	5720	73	63	0.18	70
6.3-6-25	960	6770	55	62	0.18	70
6.3-6-30	960	4500	105	67	0.37	73
6.3-6-30	960	6640	96	65	0.37	73
6.3-6-30	960	8960	65	64	0.37	73
6.3-6-35	960	5720	113	68	0.37	73
6.3-6-35	960	8400	102	67	0.37	73
6.3-6-35	960	10000	81	66	0.37	73
6.3-6-40	960	7700	122	69	0.55	73
6.3-6-40	960	9470	111	68	0.55	73
6.3-6-40	960	11000	95	68	0.55	73
6.3-6-45	960	9020	124	69	0.55	73
6.3-6-45	960	10500	117	69	0.55	73
6.3-6-45	960	12100	99.8	69	0.55	73

Remark: 1. The technical data is tested at 380V~ / 50Hz / 3Ph.
2. Customized rated voltage and frequency are available.

Roof Ventilator 屋顶风机

Electrical Ratings 技术参数

型号 Model No.	转速 Design Speed (R.P.M.)	风量 Volume (m ³ /h)	总压 Pressure (Pa)	噪音 Noise (dB)	功率 Power (W)	净重 Net Weight (kg)
8.0-6-40	960	14400	347	77	1.5	320
8.0-6-40	960	20500	184	76	1.5	320
8.0-6-40	960	24300	129	74	1.5	320
8.0-6-45	960	17400	229	78	2.2	327
8.0-6-45	960	23800	200	77	2.2	327
8.0-6-45	960	26300	173	77	2.2	327
9.0-4-25	1450	17000	366	82	3	308
9.0-4-25	1450	20000	289	81	3	308
9.0-4-25	1450	22800	213	81	3	308
9.0-4-30	1450	25000	441	85	4	347
9.0-4-30	1450	28200	372	84	4	347
9.0-4-30	1450	31200	239	82	4	347
9.0-4-35	1450	28600	496	87	5.5	374
9.0-4-35	1450	33500	428	86	5.5	374
9.0-4-35	1450	37800	327	85	5.5	374
9.0-4-40	1450	34200	550	89	7.5	374
9.0-4-40	1450	39800	490	88	7.5	374
9.0-4-40	1450	45800	413	87	7.5	374
9.0-4-45	1450	38000	602	91	11	416
9.0-4-45	1450	46200	532	90	11	416
9.0-4-45	1450	53400	420	89	11	416
9.0-6-25	960	10000	176	73	1.1	282
9.0-6-25	960	13600	123	71	1.1	282
9.0-6-25	960	15500	83.1	70	1.1	282
9.0-6-30	960	15000	194	75	1.5	290
9.0-6-30	960	18000	153	74	1.5	290
9.0-6-30	960	19600	125	73	1.5	290
9.0-6-35	960	18100	218	78	2.2	302
9.0-6-35	960	21900	171	76	2.2	302
9.0-6-35	960	25100	142	75	2.2	302
9.0-6-40	960	21200	248	80	3	320
9.0-6-40	960	26200	209	77	2.2	320
9.0-6-40	960	29600	171	77	2.2	320
9.0-6-45	960	25000	264	81	3	320
9.0-6-45	960	30000	238	80	3	320
9.0-6-45	960	33700	206	79	3	320
9.0-6-50	960	28700	274	82	4	320
9.0-6-50	960	35600	252	81	4	320
9.0-6-50	960	37800	231	80	4	320
10.0-4-25	1450	19800	486	88	4	288
10.0-4-25	1450	21600	341	83	4	288
10.0-4-25	1450	23900	297	82	4	288
10.0-4-30	1450	21100	509	87	5.5	319
10.0-4-30	1450	27700	453	86	5.5	319
10.0-4-30	1450	33900	336	85	5.5	319
10.0-4-35	1450	31500	531	88	7.5	319
10.0-4-35	1450	38100	476	88	7.5	319
10.0-4-35	1450	45400	389	87	7.5	319
10.0-4-40	1450	27000	538	90	11	365
10.0-4-40	1450	35700	461	89	11	365
10.0-4-40	1450	47000	653	92	15	378
10.0-4-45	1450	36900	458	90	15	378

Remark: 1. The technical data is tested at 380V~ / 50Hz / 3Ph.
2. Customized rated voltage and frequency are available.

备注: 1. 以上所有参数均由380V~ / 50Hz / 3Ph进行测试。
2. 可根据客户的额定电压和频率来订做合适的产品。